

# EOMAP at a Glance

## Mapping and Monitoring Aquatic Environments

### BETTER DATA FOR BETTER DECISIONS

Founded in 2006 as a spin-off of the German Aerospace Agency EOMAP has become the premier provider in satellite-based services for coastal and aquatic stakeholders.

Hydrographic officers, water managers, but also coastal, oceanographic and environmental consultants rely on our industry-leading technology. In addition, academia, industry and NGOs partner with us for both research projects and capacity building. Our international team of 30 experts combines high professional standards with service readiness.

By turning geospatial data into valuable information we strengthen smart, sustainable decision making in business, government and society.

### KEY BENEFITS

- + Cost efficiency and time savings
- + Rapid and convenient data access
- + Worldwide data coverage, non-intrusive
- + Quality data up to 30 years back in time
- + Excellent level of support

EOMAP has been awarded several prizes, such as the Copernicus Masters Cloud Computing Challenge and the Geospatial World Award "Bathymetry".



#### Valuable insights

Satellite-based mapping and monitoring across time and space help you understand and manage aquatic environments.



#### Decision Support

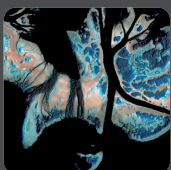
Integrate our online and software solutions into your daily workflows and simplify monitoring, reporting and planning.



#### Knowledge Increase

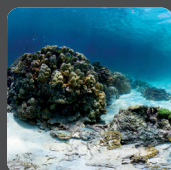
Dive deeper into the values of remote sensing with our consultancy, research and capacity building.

### EOMAP is your partner for:



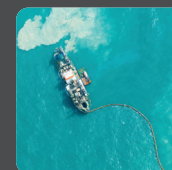
#### Shallow Water Surveys

High-quality data for survey campaigns, hydrodynamic models and environmental studies



#### Benthic Mapping

Spatial information on present and past status of shallow water habitats



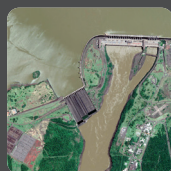
#### Dredging Operations

Analytics of baselines or monitoring of dredge plumes and water quality



#### Coastal Management

Geospatial information for coastal planning, construction and protection



#### Water Quality Analyses

Software for easy access to multi-source data of rivers, lakes and coastal waters



#### Offshore Projects

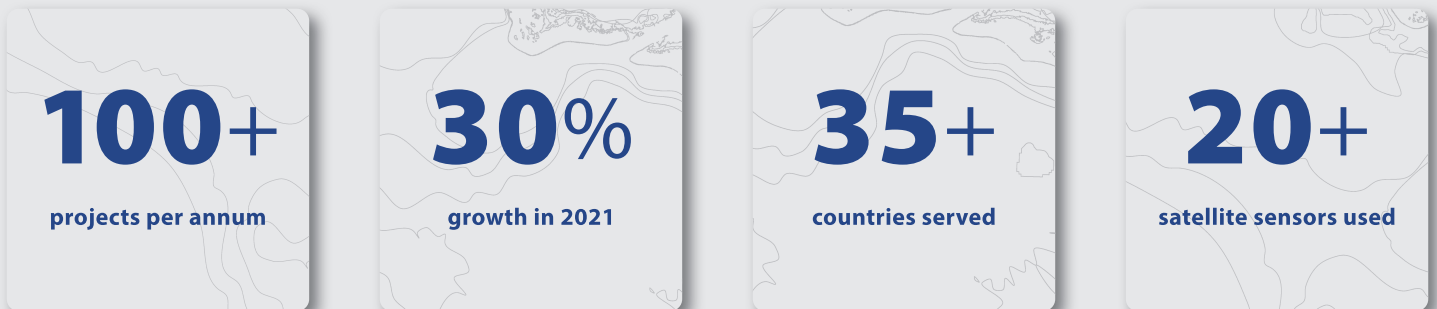
Reliable data to simplify environmental impact assessment or reporting

## Products and Services

By leveraging our proprietary technology across a wide range of satellite sensors we have redefined Earth Observation. You can rely on EOMAP's data and software services:



## Facts and Figures



## Clients and Partners

- » Hydrographic Offices, government agencies and defence
- » Coastal engineering and offshore industries
- » Environmental organisations and water agencies
- » Funding institutions, academia and NGOs
- » Port management authorities and dredging operators
- » Satellite operators

## Get in Touch

EOMAP Headquarters  
Dr. Thomas Heege  
Seefeld, near Munich (DE)

+49 8152 998 61 10  
we-care@eomap.com

EOMAP Australia  
Dr. Magnus Wettle  
Maroochydore, Queensland (AU)

+61 (07) 5660 6569  
wettle@eomap.com

EOMAP North Americas  
and Caribbean  
Edward Albada  
Santa Barbara, CA (USA)

+1 (805) 335-0495  
edward.albada@eomap.com

EOMAP Middle East,  
North Africa and India  
Rahul Sidharth  
Dubai (AE)

+971(0) 5865 36627  
rahul@eomap.com

[eomap.com](http://eomap.com)